

A Different Kind of
ENERGY COMPANY



Connecticut Expansion Project

Town of Sandisfield
Thursday, May 8th, 2014

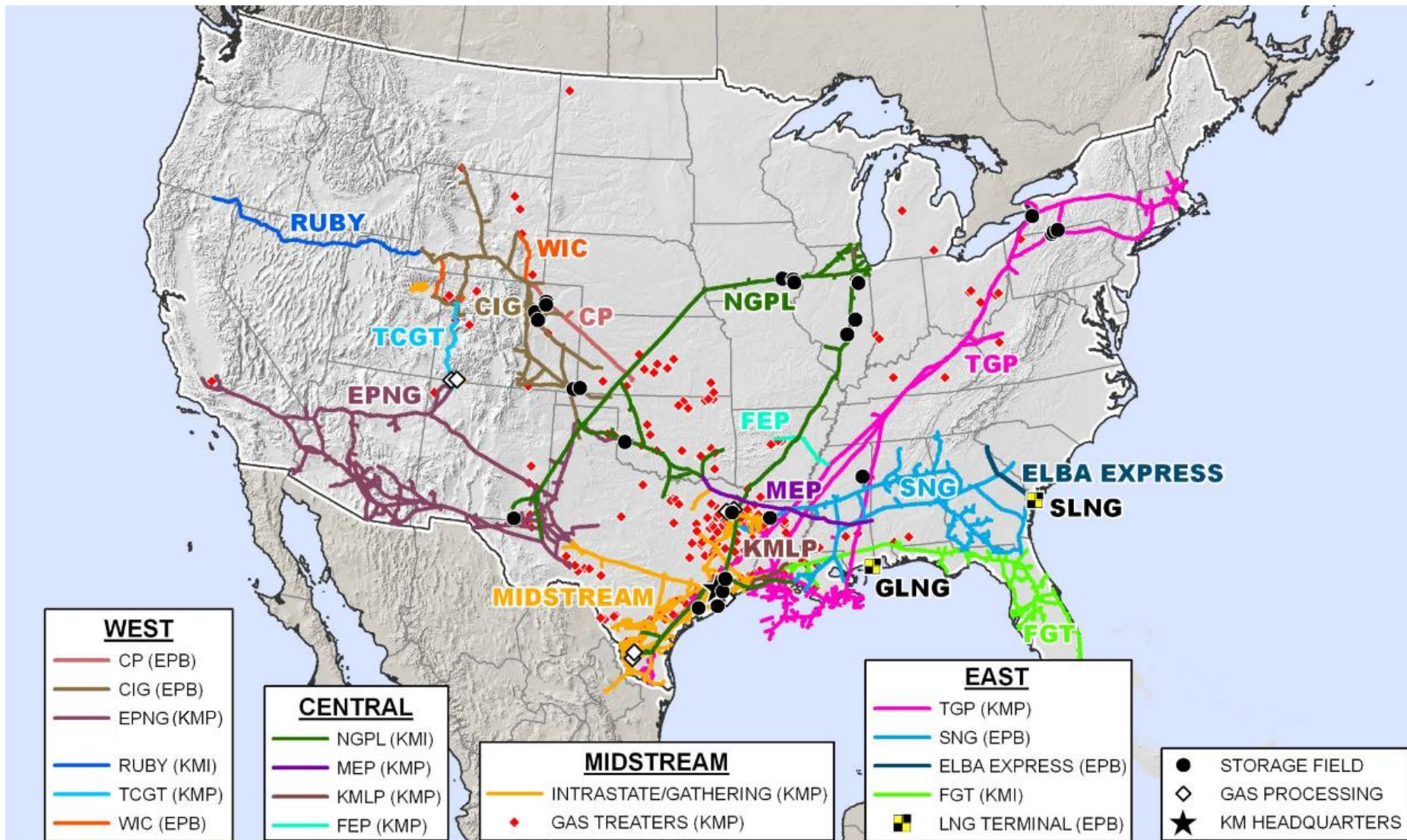


About Kinder Morgan



- Kinder Morgan is one of the largest, most experienced energy companies in North America. We own an interest in or operate approximately 80,000 miles of pipelines and 180 terminals.
- Kinder Morgan employs approximately 11,500 people throughout the United States and Canada.
- We are committed to operating our assets in a safe, ethical and transparent manner.
- We ensure public safety and safe pipeline operations through employee training, regular testing, right-of-way aerial and foot patrols and adherence to our comprehensive Integrity Management plan and procedures.
- Kinder Morgan does not have a Political Action Committee (PAC), or make any political contributions.

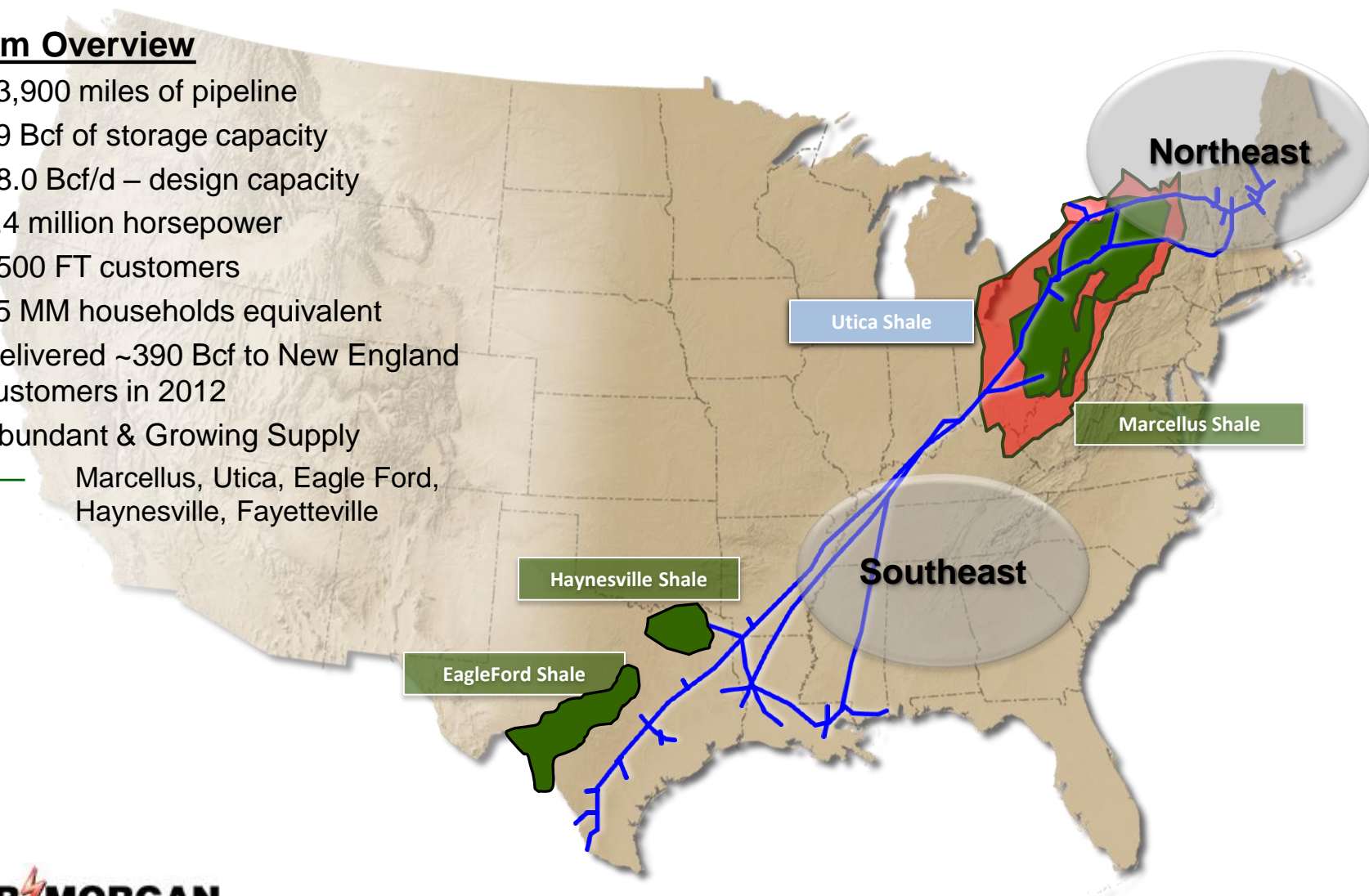
Kinder Morgan Natural Gas Pipelines



Tennessee Gas Pipeline

System Overview

- 13,900 miles of pipeline
- 79 Bcf of storage capacity
- ~8.0 Bcf/d – design capacity
- 1.4 million horsepower
- >500 FT customers
- 35 MM households equivalent
- Delivered ~390 Bcf to New England customers in 2012
- Abundant & Growing Supply
 - Marcellus, Utica, Eagle Ford, Haynesville, Fayetteville



A Different Kind of
ENERGY COMPANY



MASSACHUSETTS

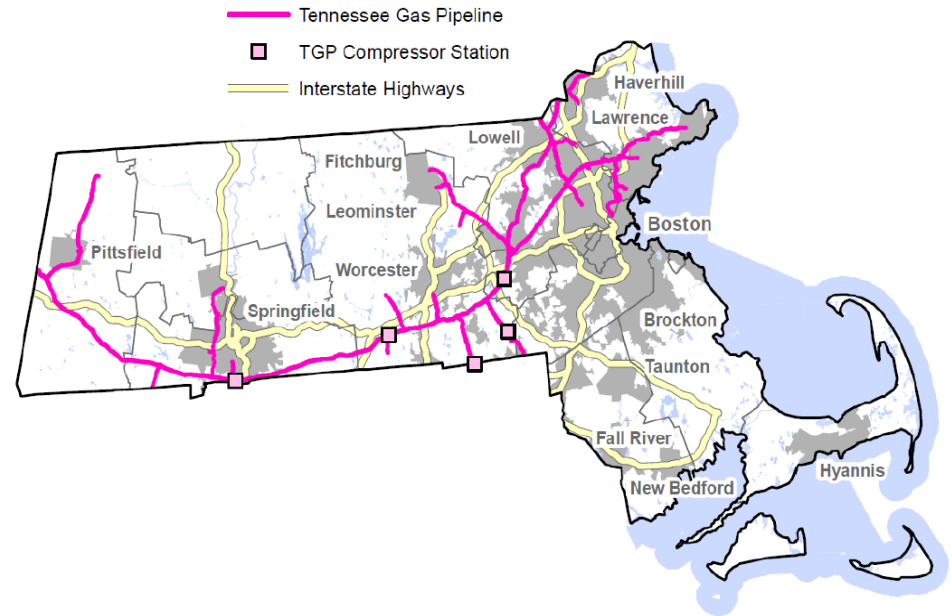
KINDER  **MORGAN**



KINDER MORGAN MASSACHUSETTS ASSETS

In Massachusetts,

- Kinder Morgan operates approximately **600 miles** of pipeline
- Kinder Morgan employed **46 people** in 2013
- Kinder Morgan's total 2013 payroll was **\$3.6 million**
- In 2013, Kinder Morgan paid approximately **\$5.85 million** to state and local taxing bodies.
- In 2013, Kinder Morgan paid over **\$603,000** to Berkshire County taxing bodies.



Kinder Morgan operates assets in eight counties throughout Massachusetts: Berkshire, Essex, Hampden, Hampshire, Middlesex, Norfolk, Suffolk and Worcester

A Different Kind of
ENERGY COMPANY



Connecticut Expansion Project Introduction

KINDER**MORGAN**



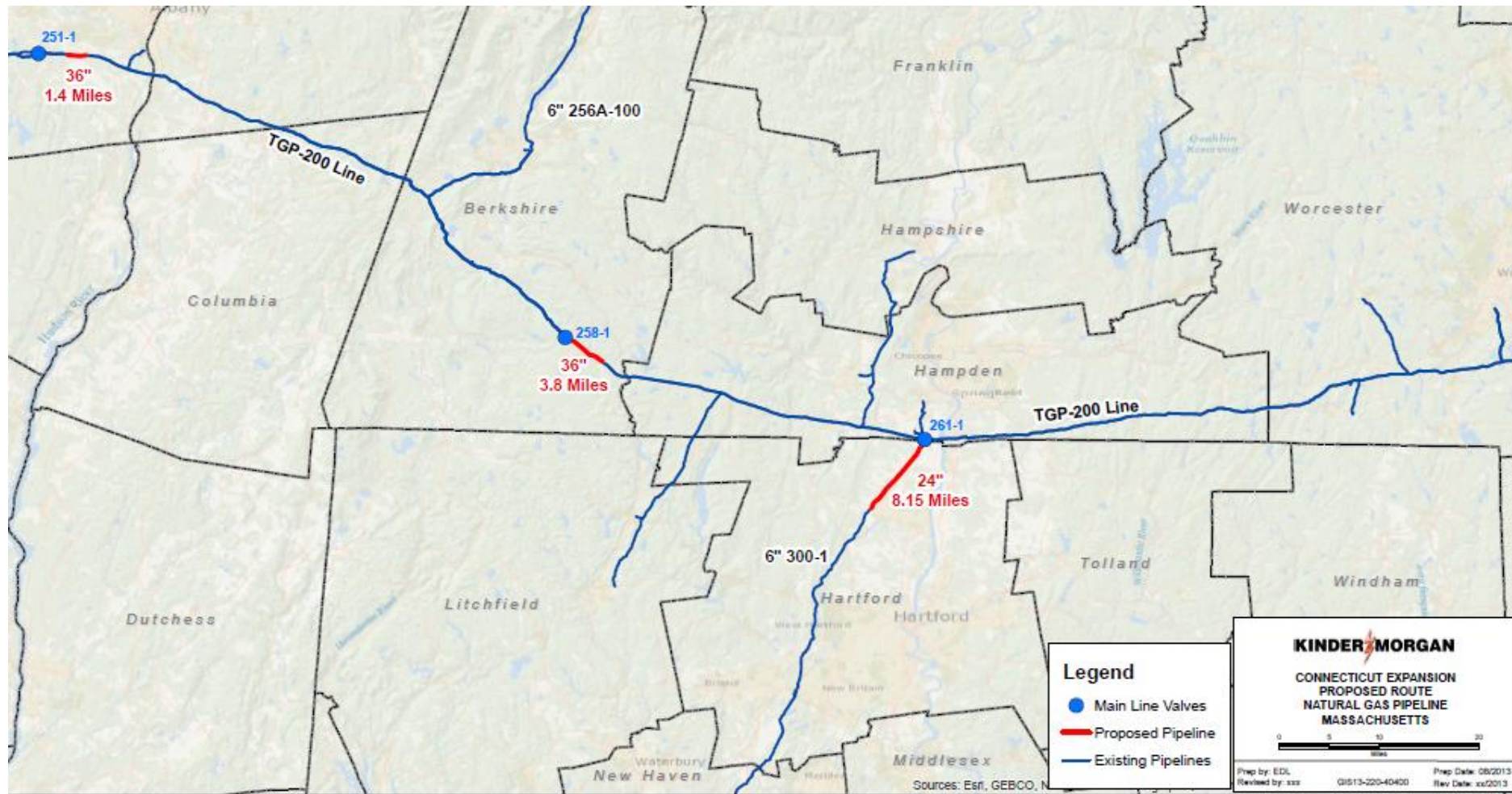
Connecticut Expansion Project Overview

- The Connecticut Expansion Project will expand the existing Tennessee Gas Pipeline system within New York, Massachusetts, and Connecticut.
- The project, as currently configured, would result in the construction of approximately 13.3 miles of 36-inch diameter pipeline looping, which is the installation of additional pipe adjacent to the existing pipeline.
 - Albany County, New York (1.4 mi.)
 - Berkshire County, Massachusetts (3.8 mi.)
 - Hartford County, Connecticut (8.14 mi.)
- The total estimated cost of the Connecticut Expansion Project is approximately \$81.2 million.
- Connecticut Natural, Yankee Gas and Southern Connecticut have signed long term agreements with Tennessee for the additional transportation capacity that CT Expansion Project will add to the Tennessee Gas Pipeline system
- Pending receipt of necessary regulatory approvals, the proposed project is estimated to be placed in-service by the winter of 2016.

Estimated Project Schedule

Action	Timing
Outreach Meetings	Ongoing
Permit Preparation	Ongoing
Agency Consultations	Ongoing
FERC filing	June 2014
Anticipated FERC approval	June 2015
Proposed Start of Construction Activity	Spring 2016
Proposed In-Service	Winter 2016

Proposed Connecticut Expansion Route



**Any final route determination is subject to surveying, land acquisition and easements, environmental impact assessments, permitting and stakeholder input.*



Regulatory Oversight

Federal, state and local agencies will have extensive regulatory authority over the proposed project. Some of these include:

Federal

- Federal Energy Regulatory Commission
- U.S. Army Corps of Engineers
- U.S. Environmental Protection Agency
- U.S. Fish and Wildlife Service

State

- Massachusetts State Legislature
- Massachusetts Executive Office of Energy and Environmental Affairs (EOEEA)
 - Dept. of Public Utilities
 - Dept. of Fish and Game
 - Dept. of Environmental Protection
 - Dept. of Agricultural Resources
 - Office of Coastal Zone Management
- MA Historical Commission

Local

- Town of Sandisfield Conservation Commission

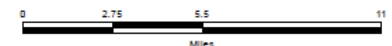


Berkshire County, MA



Tennessee Gas Pipeline
Company, L.L.C.
a Kinder Morgan company

**Connecticut Expansion Project
Berkshire County, MA**



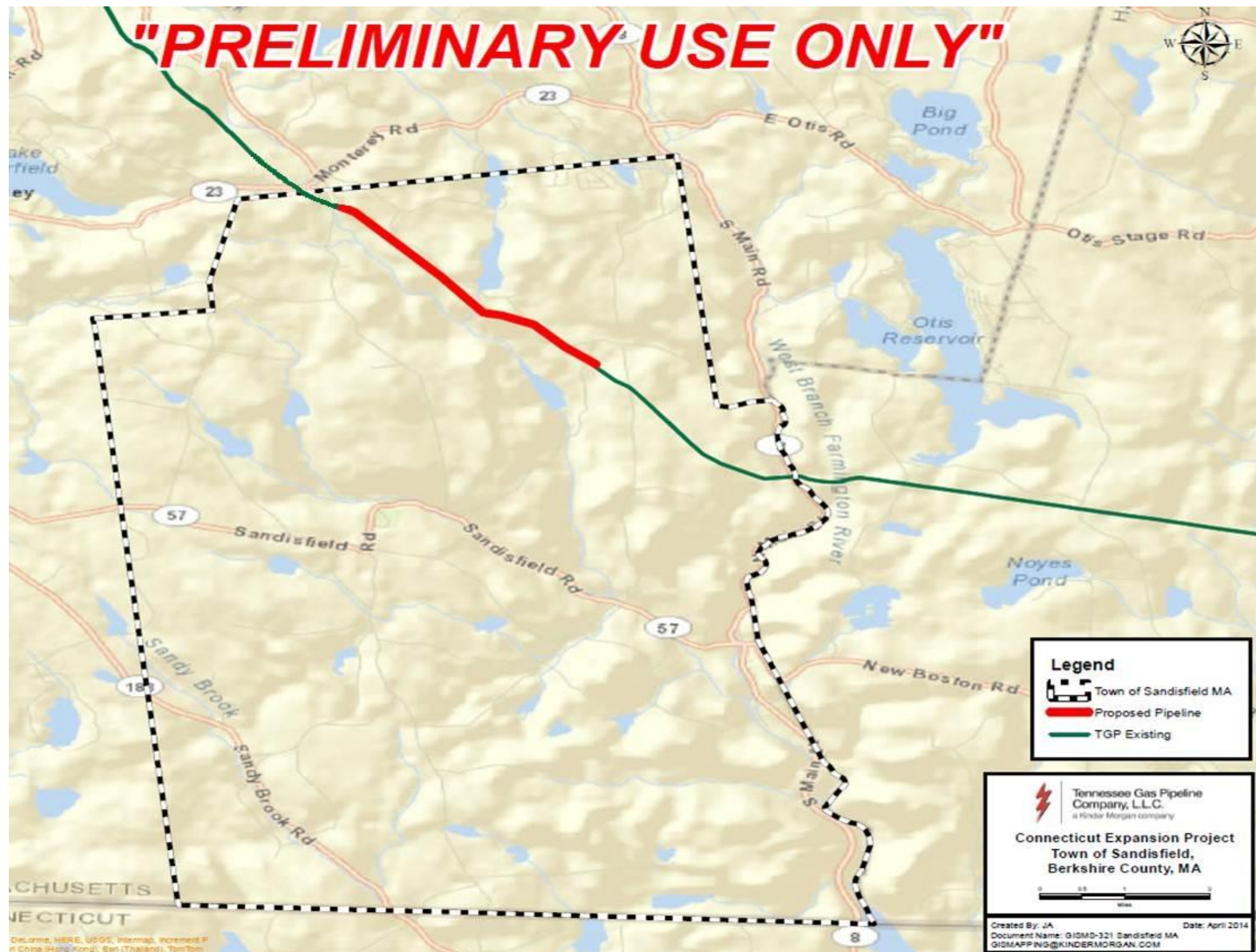
Created By: BWR

Date: March 2014

Legend

- TGP
- Proposed Pipeline

Sandisfield, MA



A Different Kind of
ENERGY COMPANY



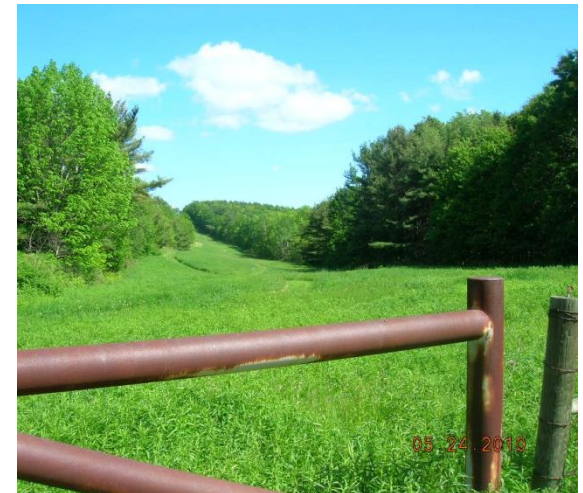
Land

KINDER**MORGAN**

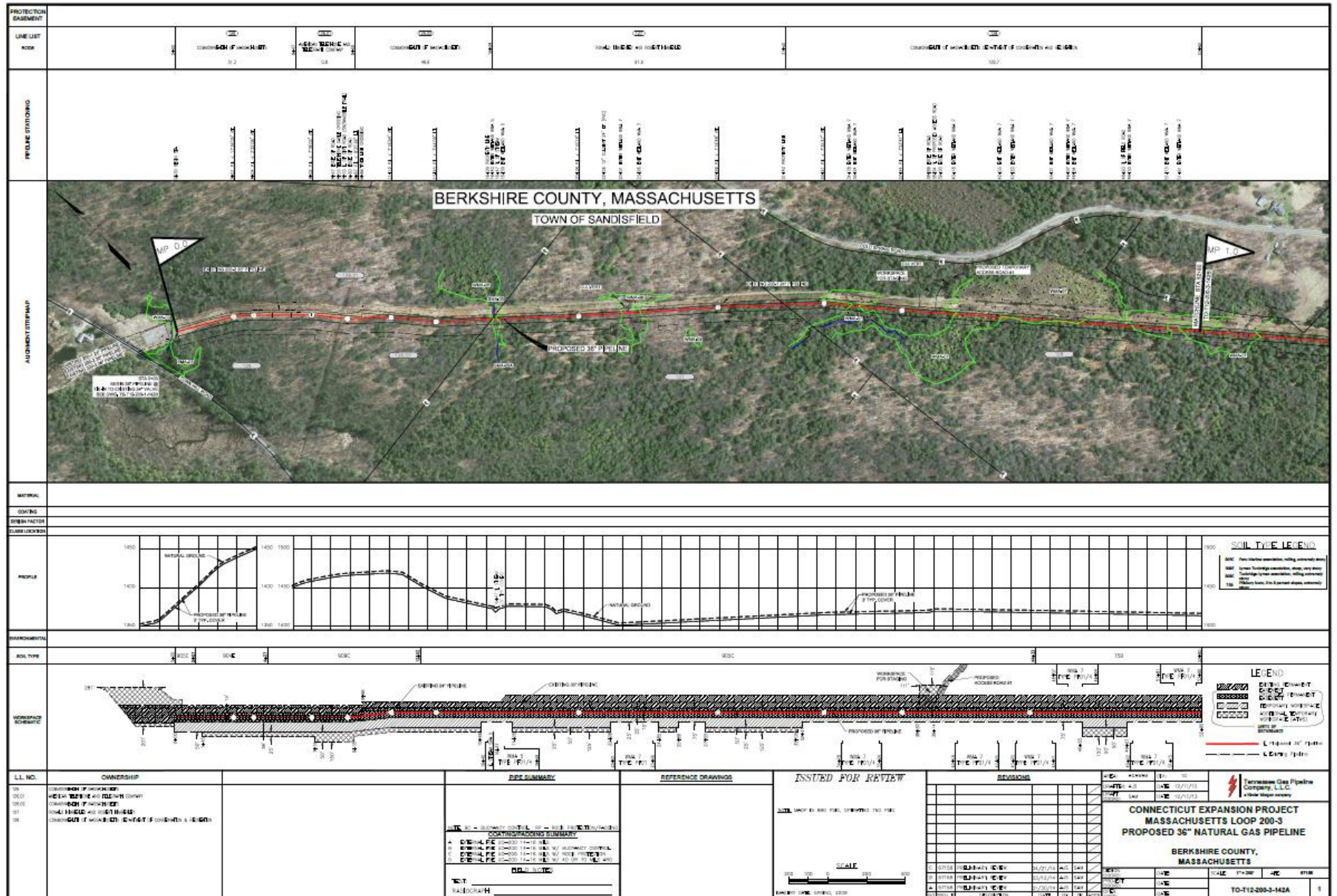


Land

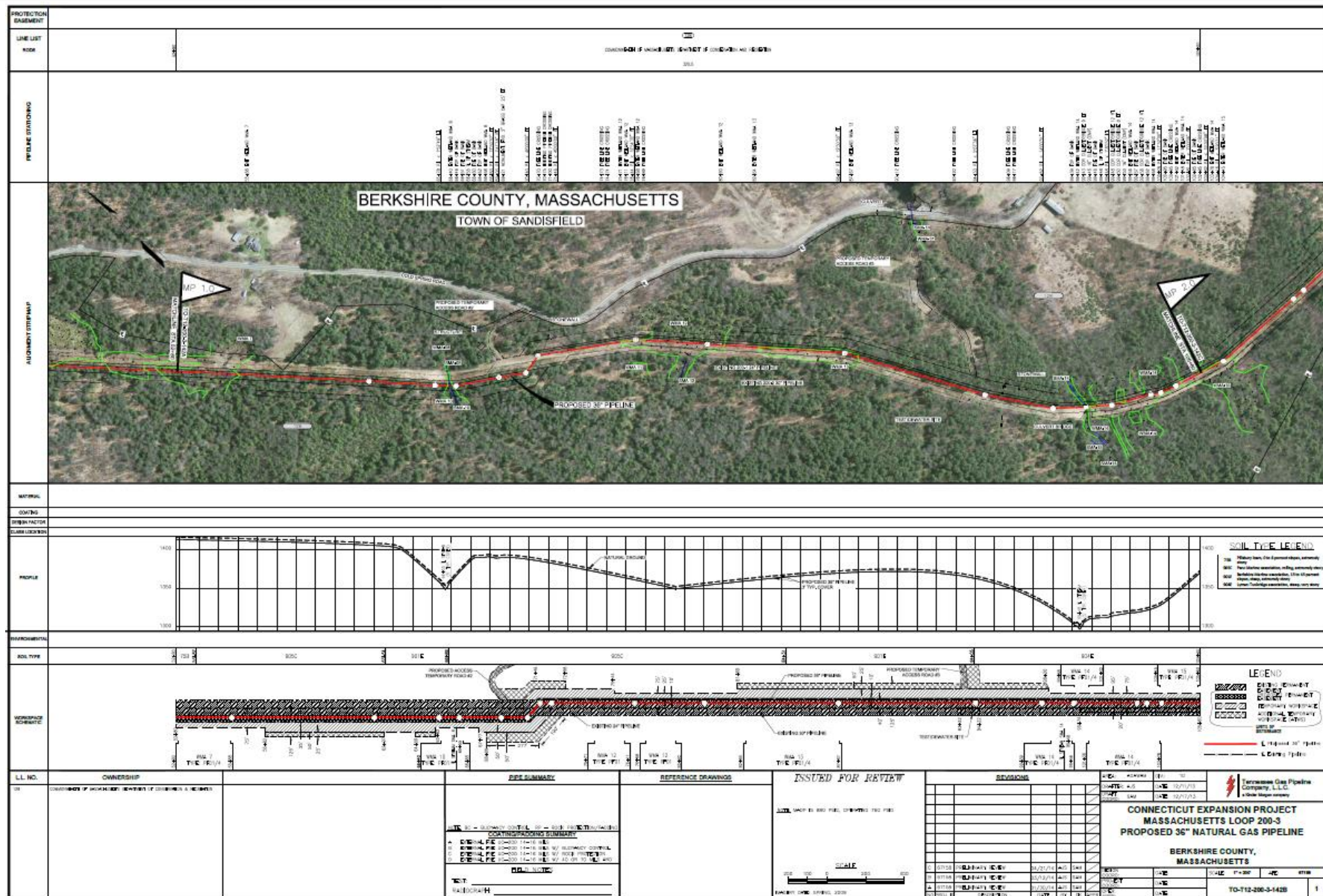
- R/W Acquisition is planned to begin in June/July 2014
- TGP will meet with all owners to review the project and the R/W documents
- TGP will review our permanent and temporary impacts on each property.



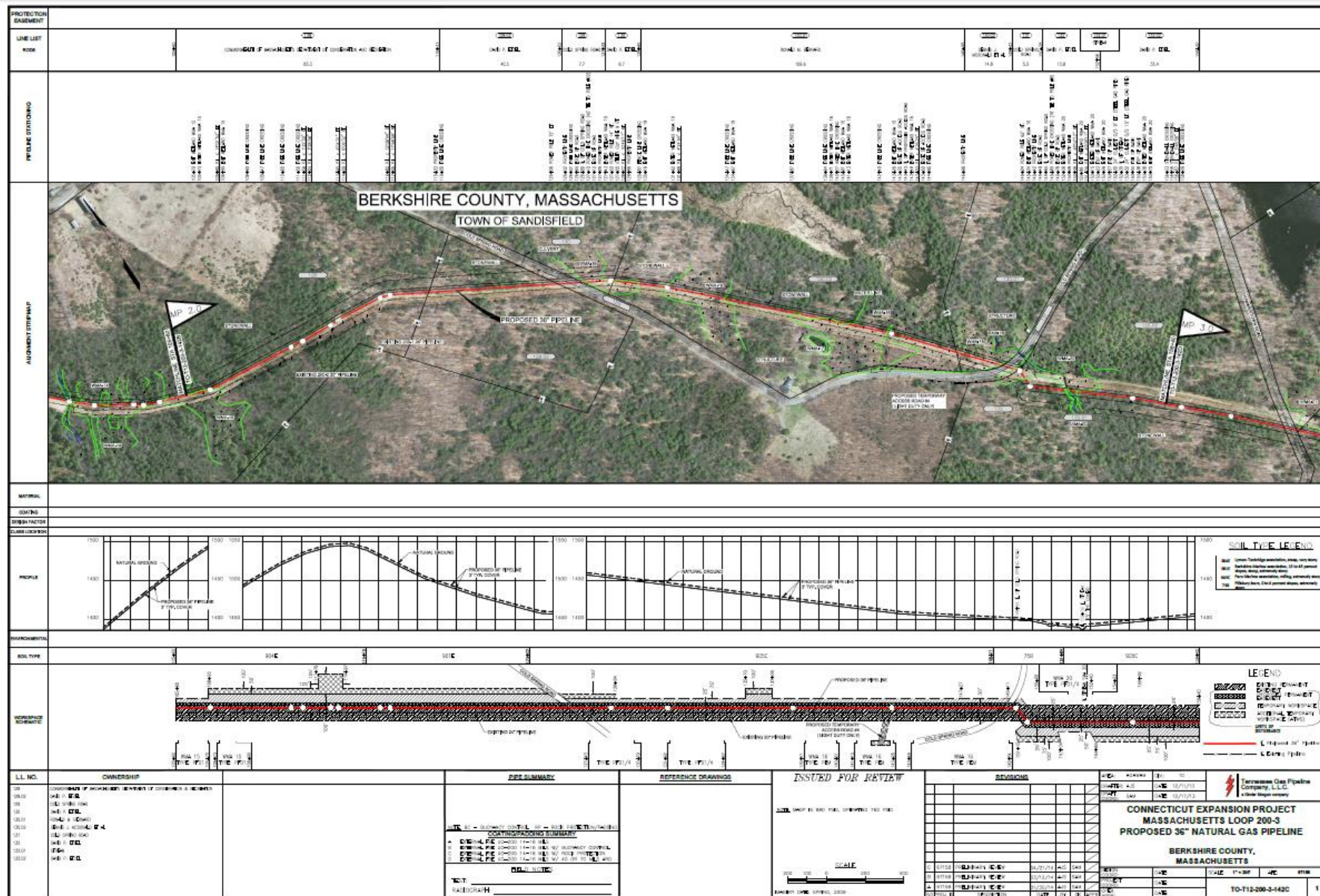
Sandisfield Alignment Sheets



Sandisfield Alignment Sheets



Sandisfield Alignment Sheets



Sandisfield Alignment Sheets

[illegible]

A Different Kind of
ENERGY COMPANY



Environmental

KINDER  **MORGAN**



Project Permits in Massachusetts

Massachusetts State Legislature and Governor	Article 97 for easements on State lands
Massachusetts Executive Office of Energy and Environmental Affairs	Massachusetts Environmental Policy Act (MEPA) Certificate (301 CMR 11.00) Environmental Notification Form and FEIR
MADEP Water Quality Certificate	314 CMR 9.00 Wetland Mitigation
Consultation (Rare Species)	MA Natural Heritage and Endangered Species Program MA Endangered Species Act (MESA) (321 CMR 10.00)
Section 106, National Historic Preservation Act Consultation	MA State Historic Preservation Office (SHPO)
Notice of Intent Agawam/Sandisfield	MA Wetland Protection Act (310 CMR 10.00) Limited Project Status

A Different Kind of
ENERGY COMPANY



CT Expansion Project Benefits



Project Benefits

- An estimated additional \$116,800 to taxing bodies in Sandisfield, MA
- Projected to create construction-related jobs during the peak construction period
- Economic stimulus to surrounding areas during construction (retail, hospitality, etc.)





Next Steps

Our Commitment to Local Communities



Kinder Morgan in the Community

2014 Donation to Eastern Pike Regional Police Department to support national gas conversion of squad cars.



In 2013, Tennessee Gas Pipeline donated to the Milford Beach in the Delaware Gap National Recreation Area to keep it open for the summer.



In 2013, Parkway Pipeline supported the Collins, MS Fire Department.



In 2013, Kinder Morgan donated 3,000 tree saplings to elementary schools in seven counties across NJ and PA to celebrate Arbor Day.



In 2012, Parkway Pipeline (a KM subsidiary) provided the funding for the construction of a new playground in Pelican Park in Mandeville, LA

Kinder Morgan Foundation

- **The Kinder Morgan Foundation** funds programs that promote the academic and artistic interests of young people in the many cities and towns across North America where Kinder Morgan operates.



Florida Mesa Elementary School, Durango, CO



Berkshire Museum, Pittsfield, MA

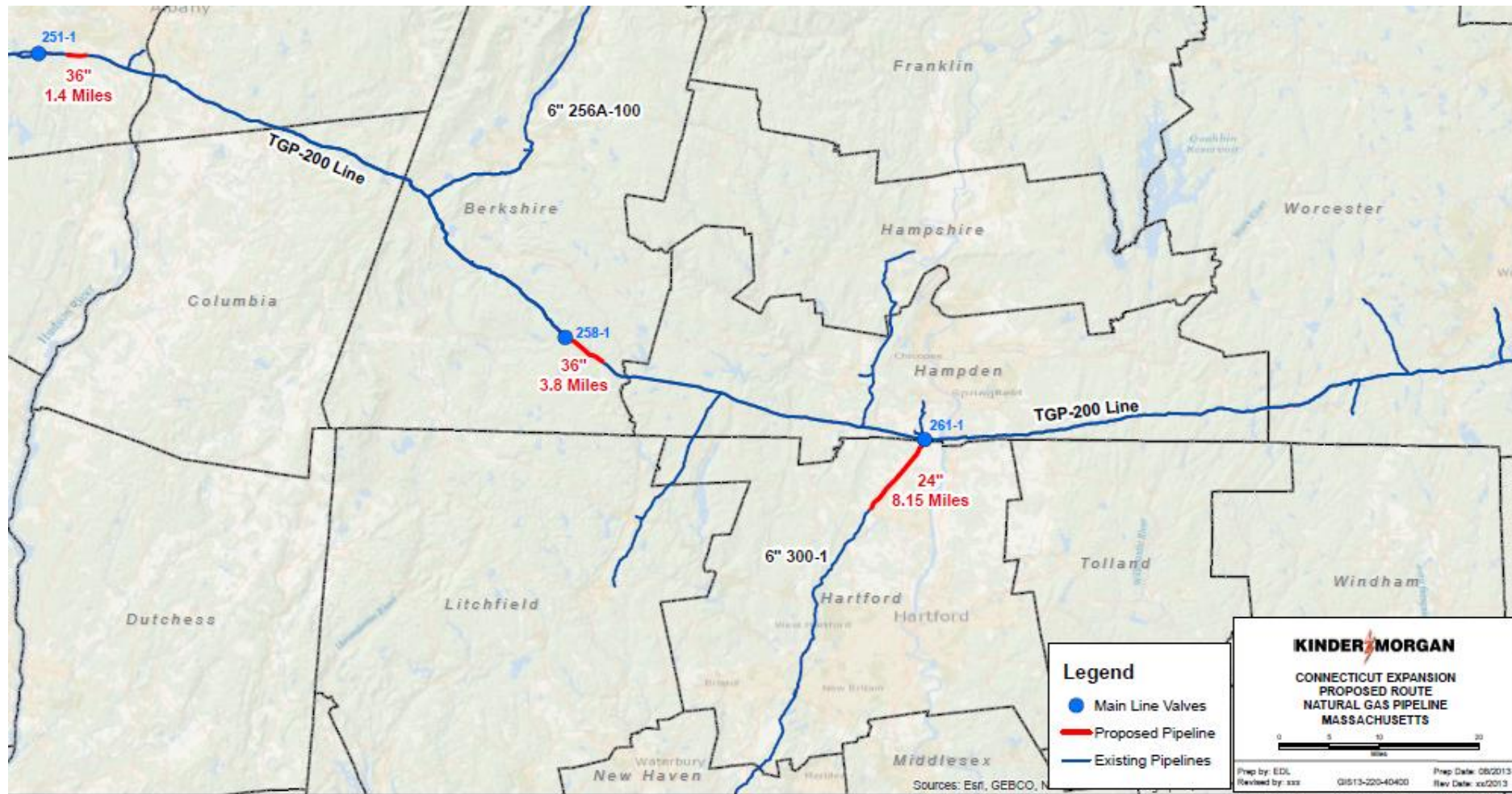


Please Touch Museum, Philadelphia, PA

www.kindermorgan.com/community

KINDER MORGAN

Connecticut Expansion Project



Kinder Morgan Asset Map

